

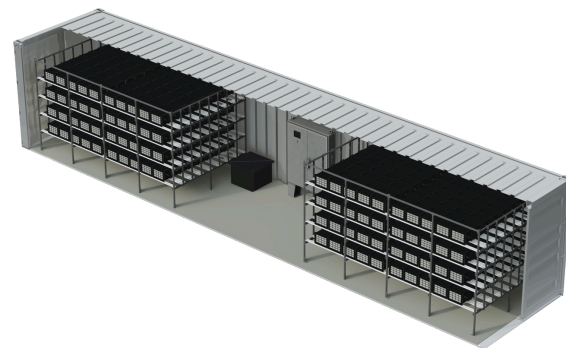
PRODUCT SPEC

BETT® FULL-SCALE 40FT HC UNIT

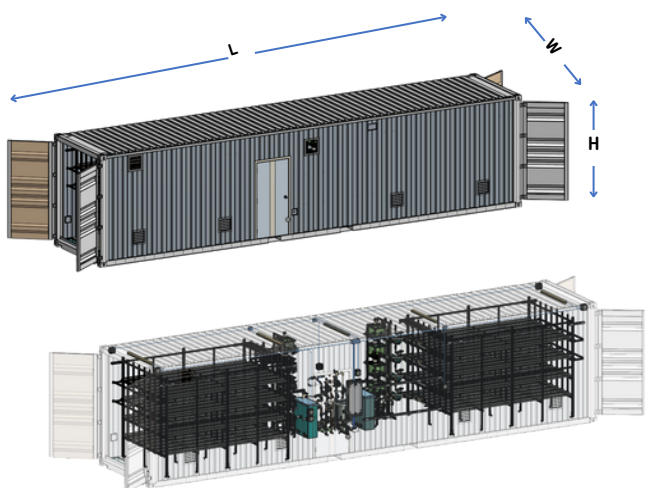


Modular, onsite wastewater treatment system designed for treating high-organic wastewater at the point-source.

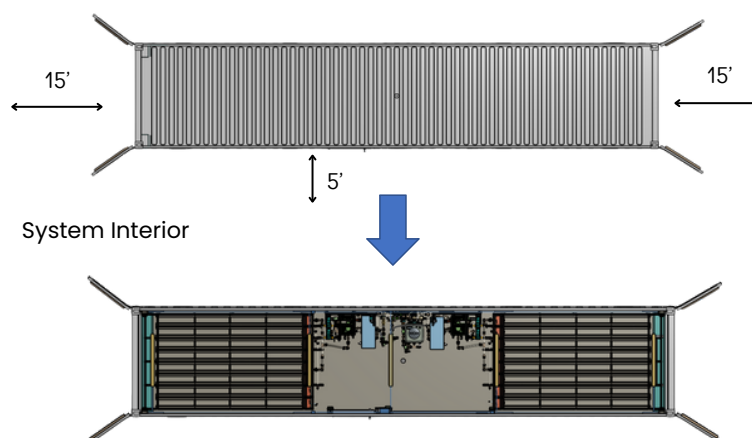
Housed in a 40-ft shipping container, or built out in a warehouse for larger volumes, it leverages our patented BETT® (BioElectrochemical Treatment Technology) to deliver high-efficiency treatment with minimal energy consumption and the lowest sludge volumes produced for any biological system on the market.



FOOTPRINT



SERVICE AREA REQUIREMENTS



TECHNICAL DATA

| Parameter | Value |
|-----------------------|-------------------------|
| Length (L) | 40 FT (12.2m) |
| Width (W) | 8 FT (2.4m) |
| Height (H) | 9 FT (2.7m) |
| Weight (Dry) | 21,800 lbs (9,888Kgs) |
| Weight (Wet) | 36,200 lbs (16,420 Kgs) |
| No. of Reactors | 640 Units |
| Communication | 4G / 5G / Satellite |
| Min Power Consumption | 8 Kva. |
| Max Power Consumption | 24 Kva. |
| Power Input | 240 VAC, Single Phase |

FEATURES

| | |
|--------------------|----------------------------|
| BOD Concentration | 1,000-150,000 ppm |
| Max TSS Conc. | 5,000 ppm |
| Max FOG Conc. | 300 ppm |
| BOD Removal | 80-95% |
| COD Removal | 70-90% |
| Total Volume | up to 10,000 gpd* |
| Energy Consumption | 0.2-0.4 kWh/kg-BOD removed |

**Per 40ft container volumes can be increased for non-containerized systems*